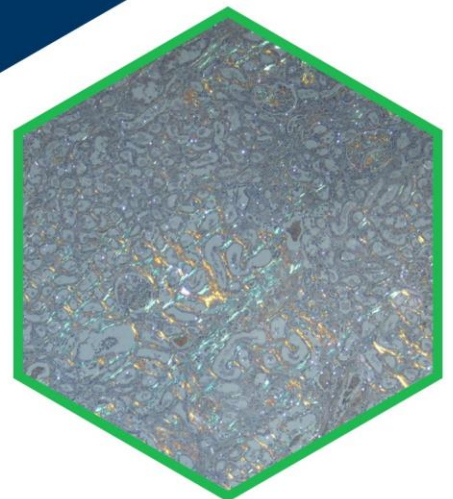
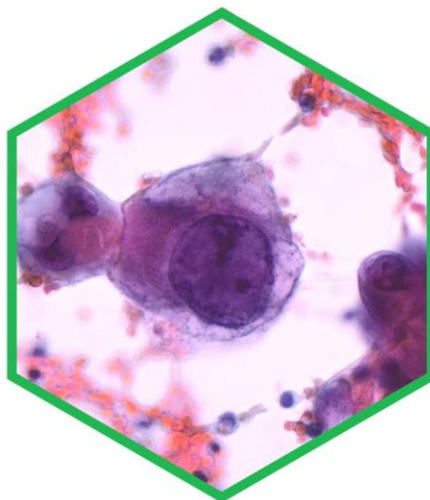
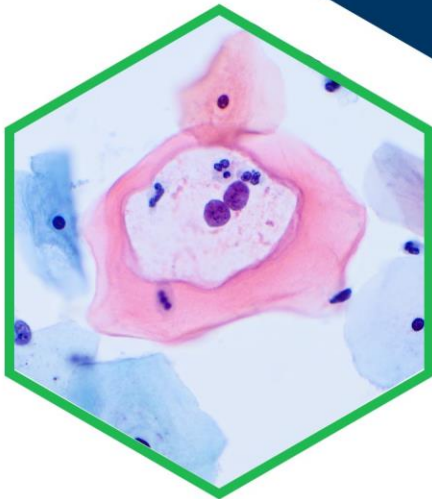




CELL SCIENCES DIGITAL SPECIALIST PORTFOLIO MODULES



Institute of Biomedical Science
12 Coldbath Square
London
EC1R 5HL

Tel 020 7713 0214
Web www.ibms.org
Email Elearning@ibms.org

Cell Science Specialist Portfolio

The Cell Science portfolio comprises of modules from the Cellular Pathology, Cervical Cytology and Diagnostic Cytopathology portfolios. Modules from at least 2 disciplines must be selected to complete a Cell Science portfolio.

The minimum number of modules required is 50% of the total number of non-optional modules from the selected disciplines, and a minimum of 25% of modules should be selected from each discipline. The remaining modules required to meet the minimum can be selected from one or more of the disciplines chosen. Details on the combinations and minimum numbers can be seen in appendix 1.

The application form will identify and add co-requisite modules and inform the applicant when minimum module numbers are reached.

Individuals wishing to select additional optional modules from the Genomics and Molecular Pathology portfolio and the Andrology portfolio can do so using the application form.

It should be noted that for all modules selected the module must be practically completed to a competent level as part of the training plan.

The modules which can be selected have corequisite modules, i.e. modules that need to be completed together. These modules can be seen in the tables below.

All specialist portfolios include the quality module.

Cellular Pathology Co-Requisites

Module	Corequisites
1. Tissue Selection	None
2. Decalcification	Module 1
3. Tissue Processing and Embedding	Module 1
4. Fixation	Modules 1, 3,
5. Cryotomy	Modules 1, 3, 4
6. Microtomy	Modules 1, 3, 4
7. Breast Histology	Modules 1, 2, 3, 4, 6, 17, 18, 19, 21
8. Cardiothoracic Histology	Modules 1, 3, 4, 6, 17, 18, 21
9. Endocrine Histology	Modules 1, 3, 4, 6, 17, 18, 21
10. Gastrointestinal and Hepatobiliary Histology	Modules 1, 3, 4, 6, 17, 18, 19, 21
11. Genitourinary Histology	Modules 1, 3, 4, 6, 17, 18, 21
12. Gynaecological Histology	Modules 1, 3, 4, 6, 17, 18, 19, 21
13. Head and Neck Histology	Modules 1, 3, 4, 6, 17, 18, 21
14. Haematolymphoid Histology	Modules 1, 3, 4, 6, 17, 18, 19, 21
15. Osteoarticular and Soft Tissue Histology	Modules 1, 2, 3, 4, 6, 17, 18, 21
16. Skin Histology	Modules 1, 3, 4, 6, 17, 18, 19, 21
17. Haematoxylin and Eosin (H&E)/Special Staining Technique Theory	Modules 1, 3, 4, 6
18. Immunohistochemistry Techniques (IHC)	Modules 1, 3, 4, 6
19. Companion Diagnostics	Modules 1, 3, 4, 6
20. Molecular Pathology for Cellular Pathology	Modules 1, 3, 4, 6
21. Microscopy Techniques	Modules 1, 3, 4, 6
22. Digital pathology and Artificial Intelligence	Modules 1, 3, 4, 6
23. Bone Marrow Trephine	Modules 1, 2, 3, 4, 6, 17, 18, 19, 21
24. Central Nervous System (CNS)	Modules 1, 3, 4, 6, 17, 18, 21
25. Electron Microscopy	Modules 1, 3, 4, 6, 17, 18, 21, 22
26. Mohs	Modules 1, 3, 4, 5, 6 17, 18, 21
27. Muscle and Nerve Biopsies	Modules 1, 3, 4, 5, 6, 17, 18, 21
28. Ophthalmic Biopsy	Modules 1, 3, 4, 6, 17, 18, 21
29. Rectal Biopsies for Suspected Hirschsprung's Disease	Modules 1, 3, 4, 6, 17, 18, 21

Cervical Cytology Co-Requisites

Module	Corequisites
30. Cervical Screening Programmes	Module 31
31. Aetiology and Epidemiology of Cervical Cancer	Module 30
32. Processing of Samples for the Detection of Human Papillomavirus (HPV)	None
33. Primary Care, Specimen Collection and Processing for Cytological Evaluation	Module 30
34. Normal Cervical Cytology and Micro-organisms	Modules 30, 31, 33, 32
35. Abnormal Cervical Cytology	Modules 30, 31, 32, 33, 34
36. Diagnosis and Treatment of Pre-malignant Changes and Malignancies of the Female Genital Tract (FGT)	Modules 30, 31, 32, 33, 34, 35

Diagnostic Cytopathology Co-Requisites

Module	Corequisites
37. Principles and Practice of Diagnostic Cytology	Module 38
38. Diagnostic Cytology Sample Preparation	Module 37
39. Cancer, Stratified Medicine, and the Role of Ancillary Testing	Module 37, 38
40. Respiratory Tract	Module 37, 38, 39
41. Urinary Tract	Module 37, 38
42. Serous Cavities	Module 37, 38, 39
43. Synovial Fluids	Module 37, 38

Appendix 1

Cell Science Portfolio Requirements

Portfolio Disciplines Selected	Minimum number of Total Modules Required	Minimum Modules Required per Discipline
Diagnostic Cytopathology +Cervical Cytology	7	2 Diagnostic Cytopathology + 2 Cervical Cytology
Cervical Cytology + Cellular Pathology	15	2 Cervical Cytology + 6 Cellular Pathology
Cellular Pathology + Diagnostic Cytopathology	14	6 Cellular Pathology + 2 Diagnostic Cytopathology
Cellular Pathology + Diagnostic Cytopathology +Cervical Cytology	18	6 Cellular Pathology + 2 Diagnostic Cytopathology + 2 Cervical Cytology

About this version

Document Title: IBMS Digital Specialist Portfolio Cell Sciences Modules

Produced by: Qualifications

Contact: Elearning@ibms.org

T: + 44 (0)20 7713 0214

Version: Version 1.1

Date active: January 2025

Copyright and disclaimer

This document and its contents including the IBMS logo are the property and trademarks of the Institute of Biomedical Science (IBMS). The copyright on this material is owned by the IBMS (unless otherwise explicitly stated). This document or no part of it may be copied, reproduced, republished, downloaded or transmitted in any way, other than for your own personal, non-commercial use.

Prior written permission must be obtained from the IBMS, using the contact details above, for any other use of this material. All rights are reserved.



copyright © Institute of Biomedical Science 2024

About IBMS publications

The IBMS publishes a wide range of professional and scientific publications and guidance.