

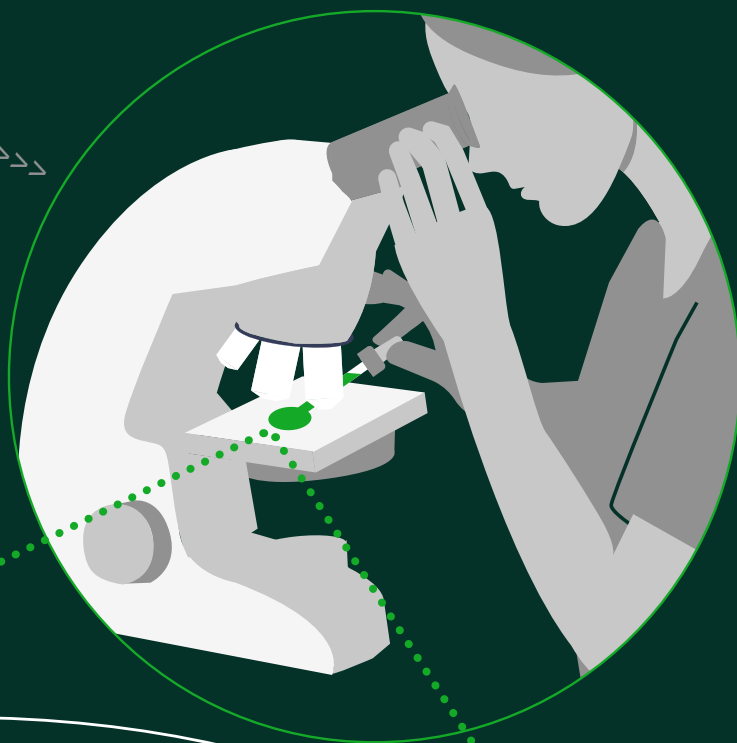
# The economic value of Biomedical Scientists

Biomedical Scientists play a crucial role in

**95%** of clinical pathways



Focusing solely on  
**bowel cancer  
patient pathway**  
alone...



Biomedical Scientists  
are estimated  
to contribute

between  
**£115m &  
£571m**

to the healthcare  
system per year

between  
**2,400  
& 5,600**  
life years  
per year

between  
**£9,100 &  
£21,400**

per cancer  
patient